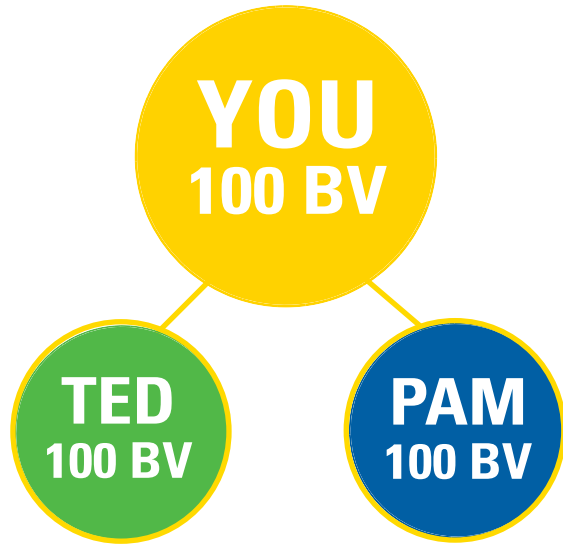


# 50% PAYOUT SUMMARY + HOW TO **FOCUS** ON ONE ORGANIZATION

Isagenix® provides one of the most distributor-friendly programs in existence and has one of the strongest payouts in the Network Marketing industry. 50% of total sales of commissionable product is paid to the Isagenix® Sales Force in commissions and bonuses



- \$39 Annual Membership Fee ~ Complete Website
- Earn up to 50% Retail Profit.
- Earn PIB (Product Introductory Bonus).
- Generate 300 BV in your Minor Volume Leg and 600 BV in your Major Volume Leg (Total 900 BV to earn a Team Cycle).
- Calculates DAILY. Pays WEEKLY.
- Executives earn 10% Matching Team Bonus on Personally Enrolled Consultants.



**AUTOSHIP REWARDS PROGRAM . . .**  
Must Be On 100 BV Monthly Autoship

**SPECIAL BONUSES AND PRICING FOR THOSE ON AUTOSHIP**

Isagenix® Pays  
**WEEKLY** on  
VISA Pay-Card (E-Count)



ISA-WALLET OPTION  
FOR CANADA

## Focus on Building **ONE** Strong Organization . . .

### Where Should You Place Your Personally Enrolled Associates ?

- Place one Associate on each side ~ one on your Left and one on your Right ~ with a minimum of 100 BV each. This **activates** your Business Center . . . you are now a **CONSULTANT**. This should be done as quickly as possible . . . to put you in "Profit Mode"
- We recommend that you enroll them both on the Autoship Plan with a minimum order of 100 BV / mo. Teach this to all your new Associates. This is Duplication and it will help you build a solid business.
- Then continue to place your Personally Enrolled people on the **Outside** Left Team or **Outside** Right Team. Eventually one of your Teams will emerge as the (2/3) Major Volume Leg . . . and the other will be the Minor (1/3) Volume Leg. Major and Minor Volume could switch sides depending on how your team is building.

### How Do You Earn the 10% Matching Bonus ?

- You are eligible to earn a 10% Matching Bonus on all the cycles of your Personally Enrolled Consultants when you become an Executive. To be a qualified **Executive** ~ you need to have five (5) Personally Enrolled "paid as" Consultants on each of your two (2) Teams.
- To become a Crystal Executive . . . Achieve Executive status in your first 6 months.

### CAN you ~ and SHOULD you ~ Sponsor your Spouse ?

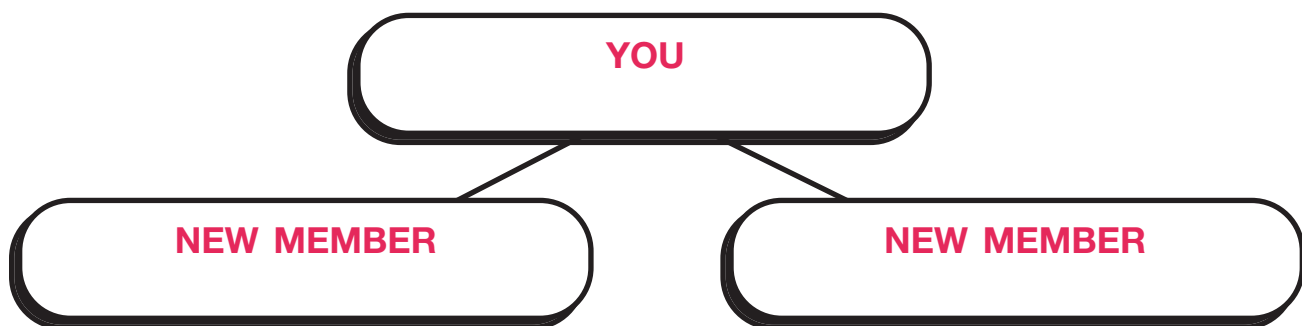
- Yes . . . you **can** sponsor your spouse. However, we recommend to not build on the inside leg of your spouse.
- Focus on building both your **Outside** legs. This promotes Team Work and creates excitement on your Team ~ by not diluting your effort from your outside legs.

# GET YOUR BUSINESS STARTED

This is a very simple business. The Products work and the Income Plan works. People will see how good you look and how happy you are. They will want to have that success also. You are truly helping people by sharing the Isagenix program with them and the sooner you do that, the sooner you will get your business started.

- **Get Started on the Product Right Away.** To make it more fun ~ try the product with your spouse or friend. The “Buddy” system increases your success and excitement.
- **Start Sharing with Others.** By using the products, you will develop your own “success story”. In the meantime, use other peoples’ stories until you have your own. There are many great testimonials and pictures on [www.WeightLossHallOfFame.net](http://www.WeightLossHallOfFame.net) to inspire you and others.
- **Make a List** of everyone you know who might be interested in feeling better, looking better, losing weight, increasing energy . . . or making money. It’s fun to help people “get fit” and “get out of debt”. Here are some ideas to help you make your list.
  - Friends
  - Networkers
  - Community Groups
  - Family
  - Business Owners
  - Entrepreneurs
  - Health Practitioners
  - Colleagues
  - Athletes
  - Sports Team Members
  - Health Club Friends
  - Personal Trainers
- **Get Yourself into “Profit Mode”** as soon as you can by Personally Enrolling two people. Place one on your left and one on your right. This will make you a Consultant ~ which puts you into profit mode. This should be done in the first 24-48 hours or one week. See below.

*Teach this to your New Members ~ You + 2 and Them + 2*



- **Use Your “Support Team”.** They are here to help you succeed. Stay “connected” with your Sponsor, Upline Team, Downline Team and the Company. Use the fabulous tools . . . team calls, websites, flyers, training and info conference calls, webinars . . . This gets you information quickly to help you build your business . . . and keeps you “connected”.
- **Attend Events.** Annual Celebration, Isa-University, Super Saturday trainings, regional and local information and training meetings . . .
- **Create Events.** Home or small meeting Info sessions. Initiate 3-way calls with your Upline Support Team. Use their experience to introduce prospects and welcome New Members. This will help to advance your business quickly. Use the 24/7 recorded calls.

**Duplicate this with your team ~ Duplication is the key to Network Marketing Success !**

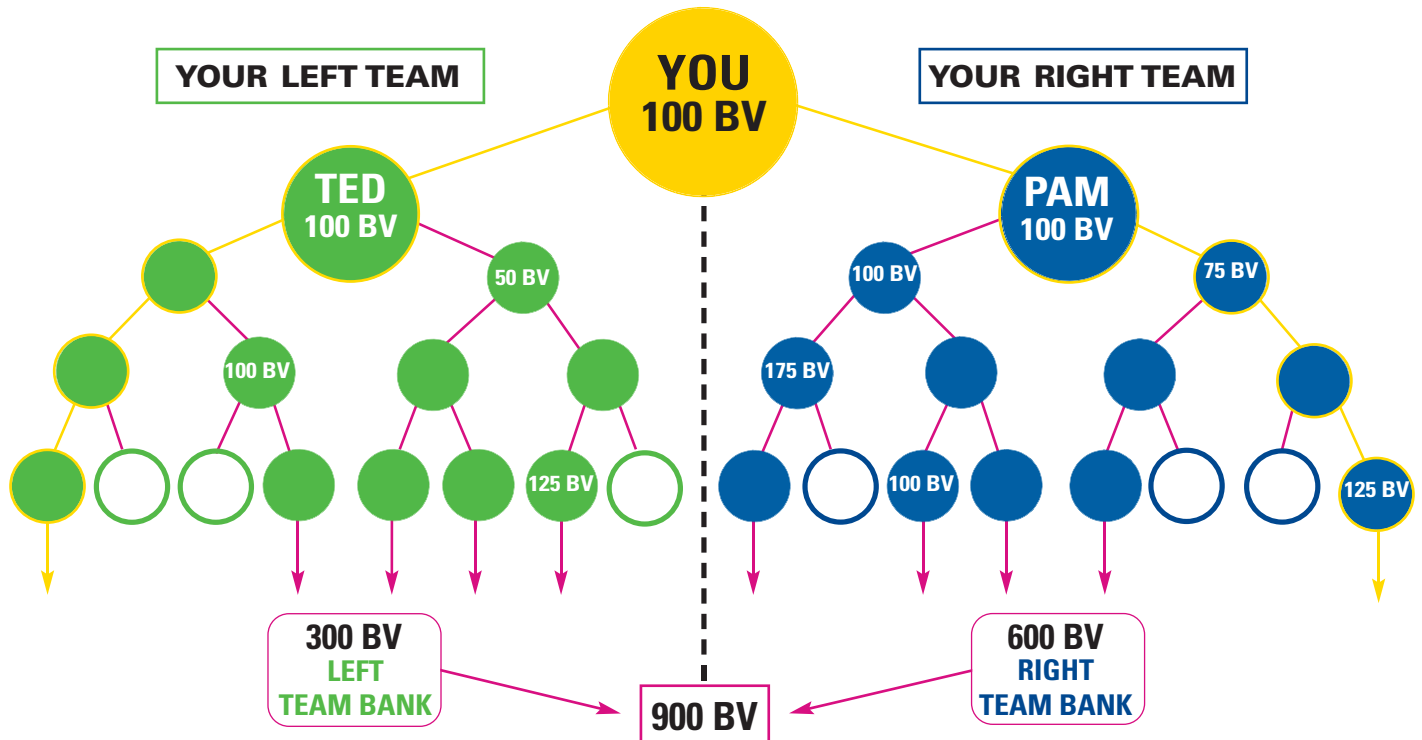
# SETTING YOUR INCOME GOALS

## HOW MUCH WOULD YOU LIKE TO EARN ?

YOU DECIDE . . . # CYCLES per WEEK = \$ per MONTH and \$ per YEAR

<b>5 Cycles /Week @ \$54 approx</b>	<b>= \$ 1,200 / mo = \$ 14,000 / yr</b>
<b>10 Cycles /Week @ \$54 approx</b>	<b>= \$ 2,300 / mo = \$ 28,000 / yr</b>
<b>15 Cycles /Week @ \$54 approx</b>	<b>= \$ 3,500 / mo = \$ 42,000 / yr</b>
<b>20 Cycles /Week @ \$54 approx</b>	<b>= \$ 4,600 / mo = \$ 56,000 / yr</b>
<b>30 Cycles /Week @ \$54 approx</b>	<b>= \$ 7,000 / mo = \$ 84,000 / yr</b>
<b>40 Cycles /Week @ \$54 approx</b>	<b>= \$ 9,300 / mo = \$ 112,000 / yr</b>
<b>50 Cycles /Week @ \$54 approx</b>	<b>= \$ 11,500 / mo = \$ 140,000 / yr</b>
<b>100 Cycles /Week @ \$54 approx</b>	<b>= \$ 23,000 / mo = \$ 280,000 / yr</b>
<b>150 Cycles /Week @ \$54 approx</b>	<b>= \$ 35,000 / mo = \$ 420,000 / yr</b>
<b>200 Cycles /Week @ \$54 approx</b>	<b>= \$ 46,500 / mo = \$ 560,000 / yr</b>
<b>250 Cycles /Week @ \$54 approx</b>	<b>= \$ 60,000 / mo = \$ 700,000 / yr</b>

*Approximation Only ~ Subject to Cycle Variation ~ Paid in \$US*



**One Cycle = 900 BV = \$ 54 (approx)**

**300 BV on One Team + 600 BV on the Other Team = 900 BV**

ALL DOLLARS ARE IN \$US. Earning levels for Isagenix® Independent Associates that appear in this publication should not be construed as representative of fixed or typical income earned with an Isagenix® business, nor are they intended to represent that other Associates will eventually achieve the same level of income. Income level achievements are dependent upon the individual Associate's business skills, personal ambition, time, commitment, activity and demographic factors. See income disclosure statement at [www.Isagenix.com](http://www.Isagenix.com).

# 2-TEAM INCOME PLAN QUICK OVERVIEW

## 5 WAYS TO EARN MONEY

### 1. RETAIL PROFIT

Earn up to 50% profit.

### 2. PRODUCT INTRO BONUS (PIB)

Enroll New Associates ~ Earn PIB on their first purchase.

### 3. TEAM BONUS CYCLES (CONSULTANT)

Paid on accumulated sales by both teams (BV).

This is Residual Income and your greatest potential to earn the Big money !

### 4. 10% MATCHING TEAM BONUS (EXECUTIVE)

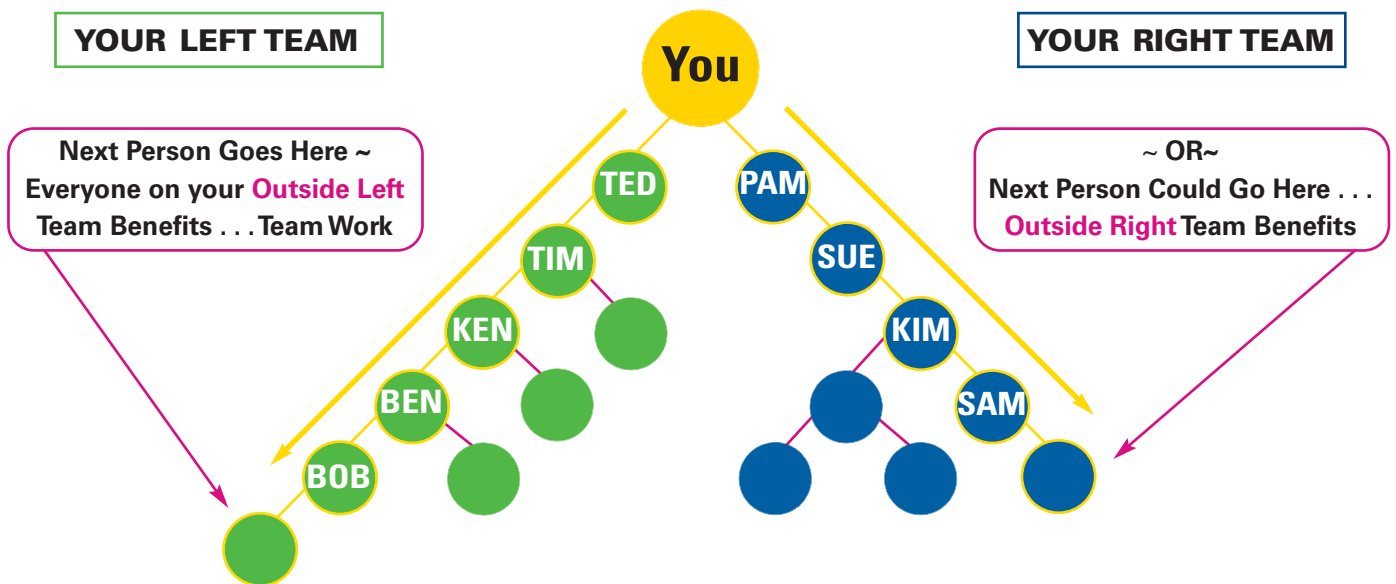
Earn an additional 10% Matching Team Bonus on Qualified Consultants whom you personally enrolled. You must have **5** on the Left Team and **5** on the Right Team.

### 5. PROMOTIONS ~ INCENTIVES ~ BONUSES



**AUTOSHIP REWARDS PROGRAM . . . Must Be On 100 BV Monthly Autoship**  
**SPECIAL BENEFITS AND PRICING FOR THOSE ON AUTOSHIP**

## BUILDING YOUR TEAM . . . BUILD OUTSIDE LEGS ONLY



# EARN PART-TIME MONEY . . . FULL-TIME MONEY . . . OR A FORTUNE

ALL DOLLARS ARE IN \$US. Earning levels for Isagenix® Independent Associates that appear in this publication should not be construed as representative of fixed or typical income earned with an Isagenix® business, nor are they intended to represent that other Associates will eventually achieve the same level of income. Income level achievements are dependent upon the individual Associate's business skills, personal ambition, time, commitment, activity and demographic factors. See income disclosure statement at [www.Isagenix.com](http://www.Isagenix.com).

# YOU + 2 and THEM + 2

HOW TO GET YOUR PRODUCTS **FREE**

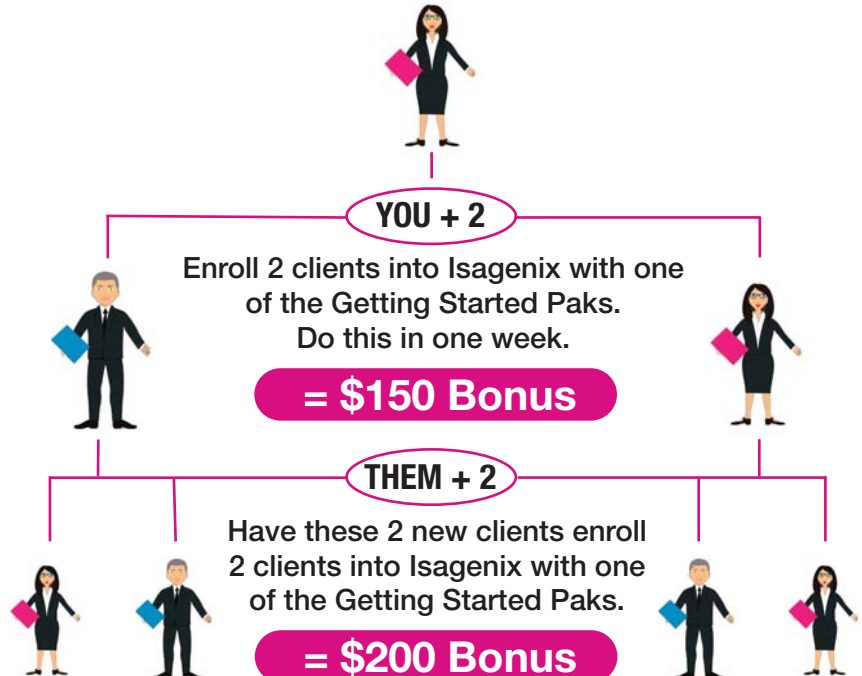
FOLLOW THIS PROVEN SYSTEM AND EARN **\$350.00 \*** IN ONE WEEK !

## QUALIFYING PAKS:

### GETTING STARTED PAKS

- 30-Day Cleansing and Fat-Burning System
- Energy and Performance System
- Healthy Aging and Telomere Support System
- Rejuvity Skin System with Ageless Essentials
- Product B Starter Pak
- e+ Starter Pak
- My Pak

YOU ENROLL INTO ISAGENIX



Enrollments must be in 1 commission week . . . to earn the DOUBLE PIB. Monday a.m. - Sunday Midnight Eastern.  
For more information ~ contact your Enrolling Sponsor / Support Team. \* Equals the cost of your product.

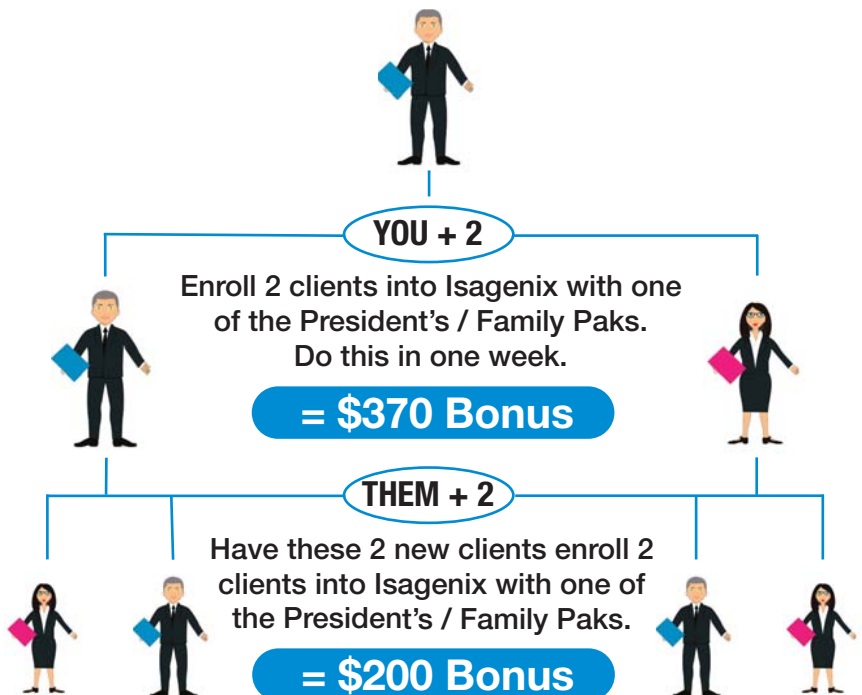
FOLLOW THIS PROVEN SYSTEM AND EARN **\$570.00 \*** IN ONE WEEK !

## QUALIFYING PAKS:

### PRESIDENT'S / FAMILY PAKS

- Weight Loss President's Pak
- Performance President's Pak
- Healthy Aging President's Pak
- Rejuvity Skin Care President's Pak
- Product B President's Pak
- PaceSetter Pak

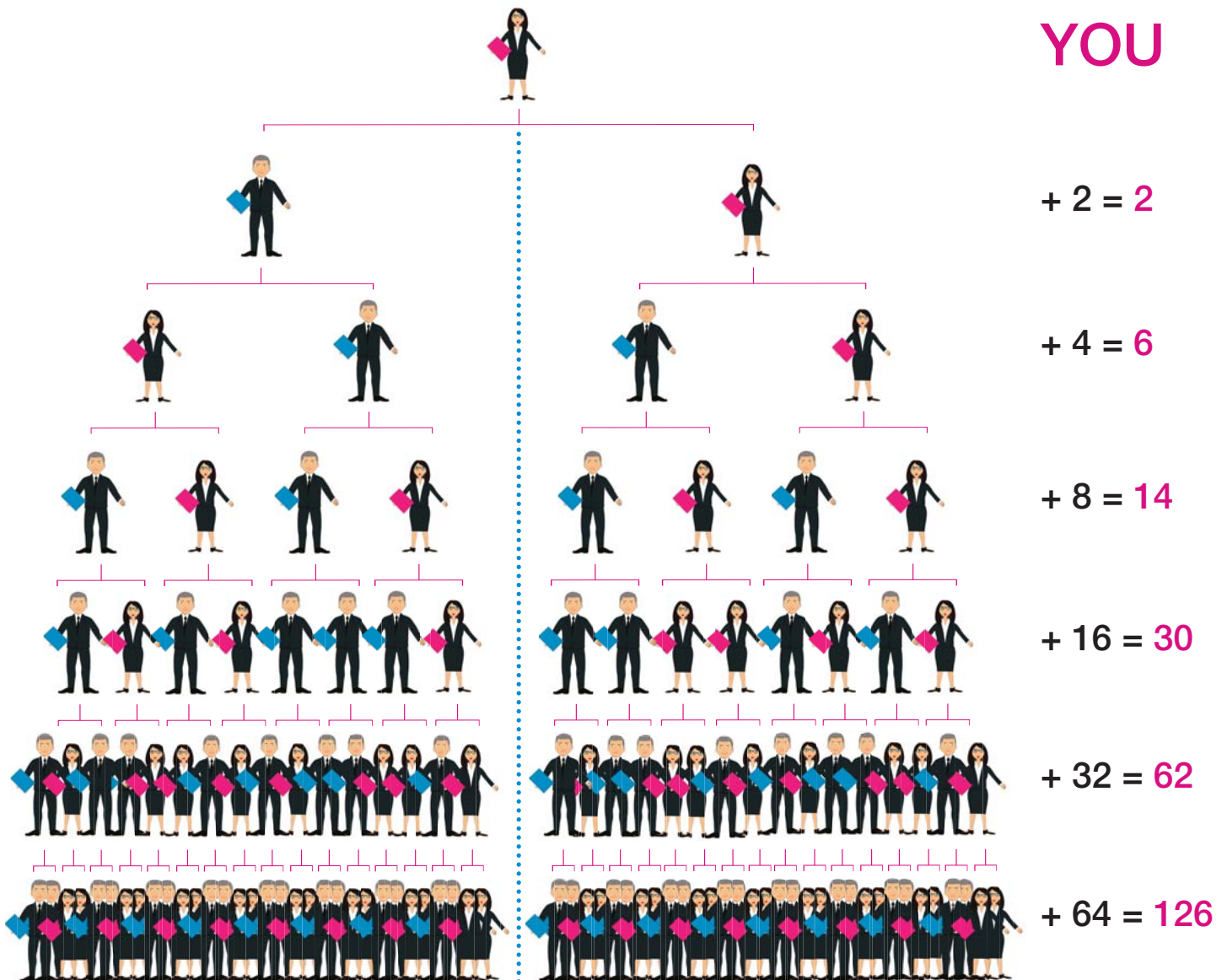
YOU ENROLL INTO ISAGENIX



Enrollments must be in 1 commission week . . . to earn the DOUBLE PIB. Monday a.m. - Sunday Midnight Eastern.  
For more information ~ contact your Enrolling Sponsor / Support Team. \* Equals the cost of your product.

# 2 X 2 ~ THE SIMPLE PROGRESSION OF NUMBERS

*You + 2 and Them + 2*



Can you find 2 people who are open to making a positive change in their life . . .  
with their Health . . . with their Wealth . . .  
and invite 2 people to do the same ?

**KEEP IT GOING . . . 2 X 2 X 2 X 2 X 2 X 2 . . .**



# CRYSTAL / MANAGER GOAL SHEET

**YOU + 2 and THEM + 2**

## GOAL #1

Become a **CONSULTANT** by Personally Enrolling one on your right and left. Try to do this in the first week . . . This puts you into "Profit Mode" . . . and you earn \$50.

## GOAL #2

Become a **MANAGER** by Personally Enrolling 2 Consultants . . . Example: 2 Consultants x \$100 each = \$200

Become a **"CRYSTAL" MANAGER**

Do this in 30 days from enrollment date ~ and earn a Bonus of \$250.

## MY GOALS

Achieve Date:

**CONSULTANT**



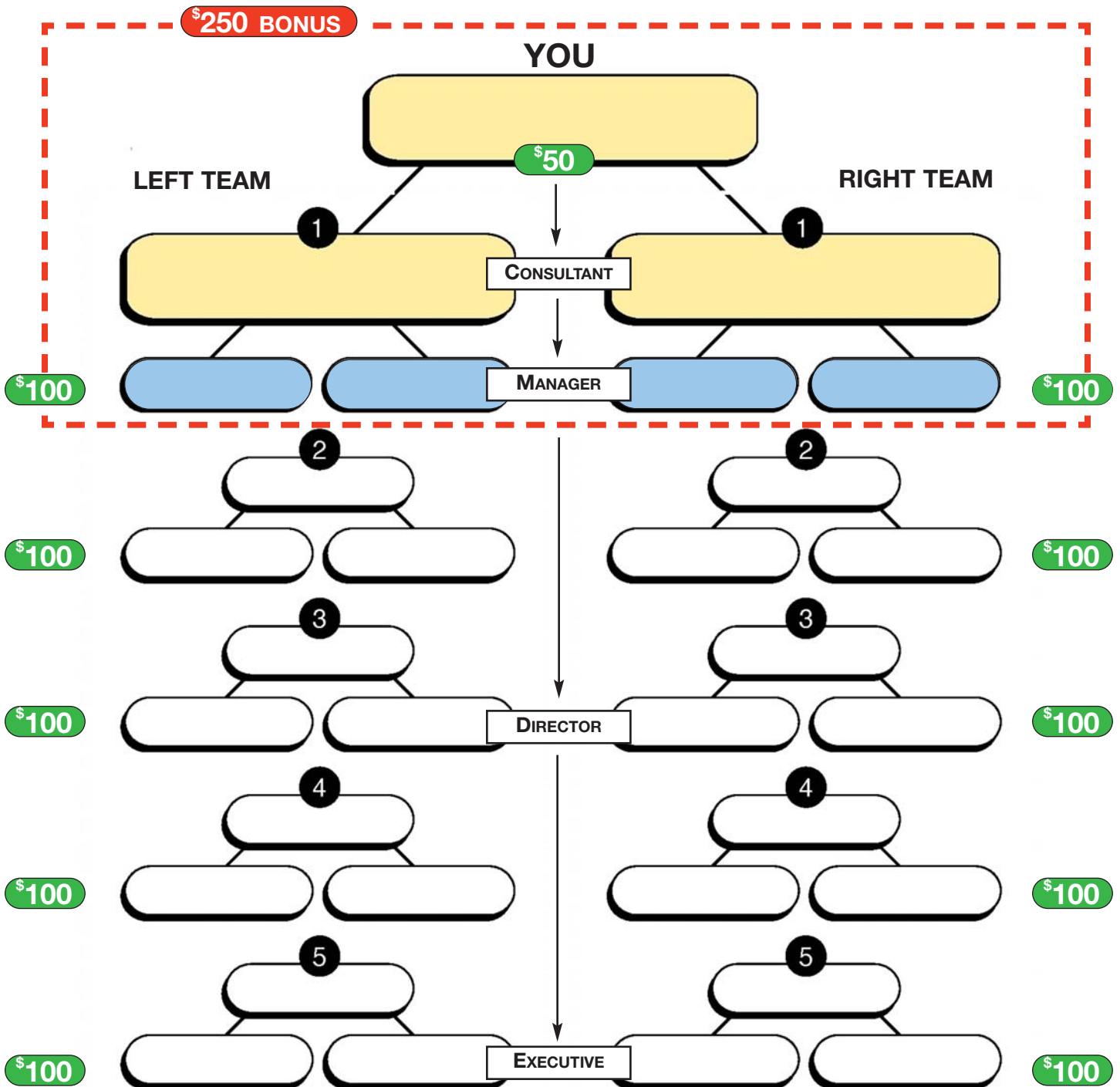
**MANAGER**



Complete Goal 2 in 30 Days for Bonus

**CRYSTAL BONUS \$250**

**TOTAL : \$500**



# CRYSTAL / DIRECTOR GOAL SHEET

**YOU + 2 and THEM + 2**

## GOAL #1

Become a **CONSULTANT** by Personally Enrolling one on your right and left. Try to do this in the first week . . . This puts you into "Profit Mode" . . . and you earn \$50.

## GOAL #2

Become a **MANAGER** by Personally Enrolling 2 Consultants . . . Example: 2 Consultants x \$100 each = \$200

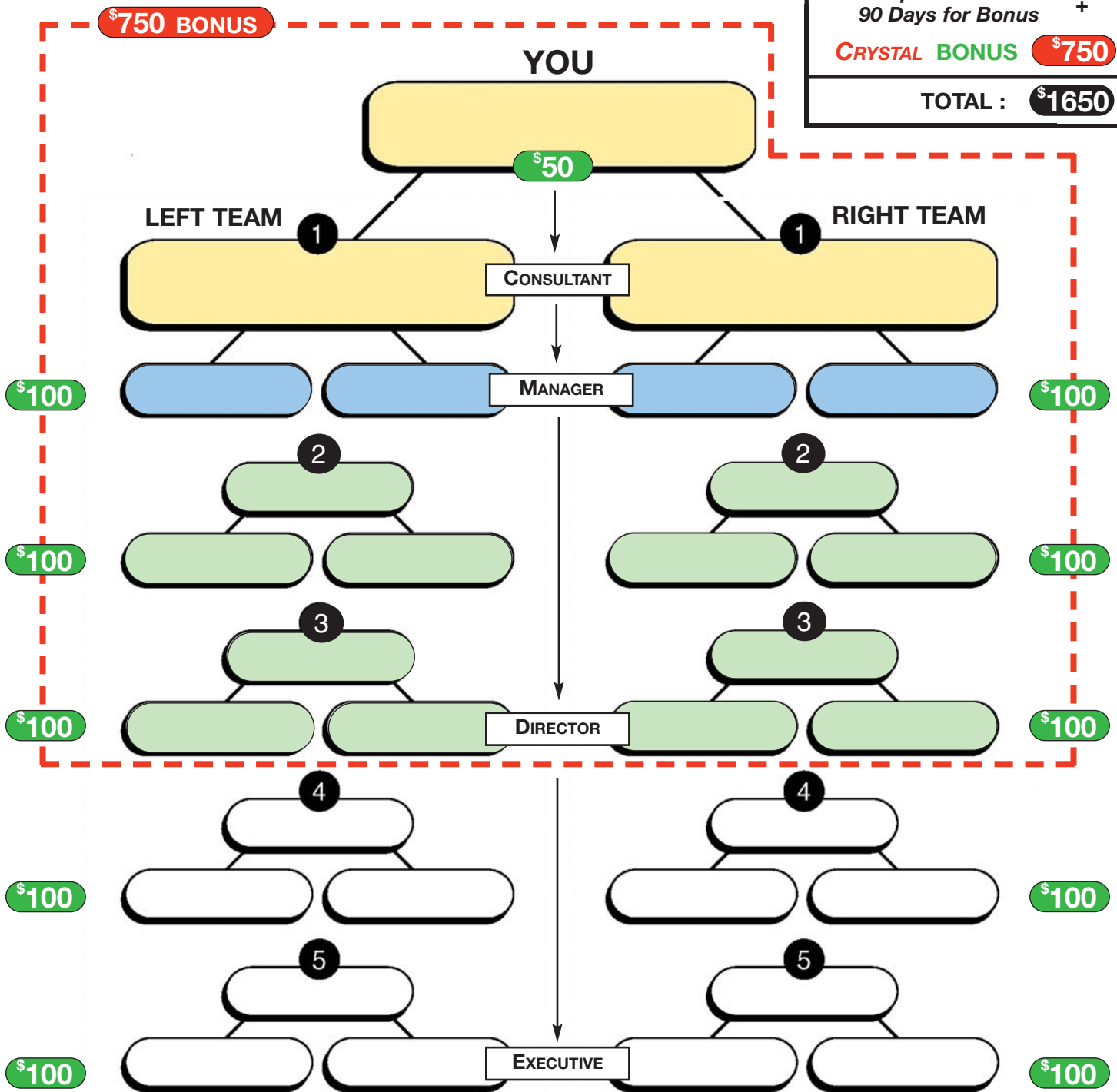
## GOAL #3

Become a **DIRECTOR** by Personally Enrolling 6 Consultants . . . Example: 6 Consultants x \$100 each = \$600

### Become a "CRYSTAL" DIRECTOR

Do this in 90 days from enrollment date ~ and earn an **ADDITIONAL Bonus of \$750**.

MY GOALS	
Achieve Date:	
CONSULTANT	\$50
MANAGER	+
	\$200
Complete Goal 2 in 30 Days for Bonus	+
CRYSTAL BONUS	\$250
DIRECTOR	+
	\$400
Complete Goal 3 in 90 Days for Bonus	+
CRYSTAL BONUS	\$750
<b>TOTAL :</b>	<b>\$1650</b>





# CRYSTAL / EXECUTIVE GOAL SHEET

**YOU + 2 and THEM + 2**

## GOAL #1

Become a **CONSULTANT** by Personally Enrolling one on your right and left. Try to do this in the first week . . . This puts you into "Profit Mode" . . . and you earn \$50.

## GOAL #2

Become a **MANAGER** by Personally Enrolling 2 Consultants . . . Example: 2 Consultants x \$100 each = \$200

## GOAL #3

Become a **DIRECTOR** by Personally Enrolling 6 Consultants . . . Example: 6 Consultants x \$100 each = \$600

## GOAL #4

Become an **EXECUTIVE** by Personally Enrolling 10 Consultants . . . 5 on each side. Example: 10 Consultants x \$100 each = \$1000.

### Become a "CRYSTAL" EXECUTIVE

Do this in 6 months from enrollment date ~ and earn an ADDITIONAL Bonus of \$1000.

## MY GOALS

Achieve Date:

CONSULTANT

\$50

MANAGER +

\$200

Complete Goal 2 in 30 Days for Bonus +

CRYSTAL BONUS \$250

DIRECTOR +

\$400

Complete Goal 3 in 90 Days for Bonus +

CRYSTAL BONUS \$750

EXECUTIVE +

\$400

Complete Goal 4 in 6 Months for Bonus +

CRYSTAL BONUS \$1000

TOTAL : \$3050

\$1000 BONUS

